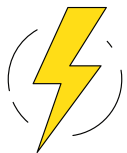


Enershield Air Barriers

shipping and receiving doors | coolers and freezers | personnel and retail doors
food prep | service bays | drive-thru doors | manufacturing and distribution



Keep your door open and closed at the same time



Energy-efficient technology that creates up to a 90% seal (versus open doorways)

A high-cost issue

With the cost of energy continuing to rise, heating and cooling costs are becoming more costly than ever. If you are a business that keeps your doors open multiple times a day to load/unload materials or have a high amount of foot traffic, your energy costs are even greater.

The easy solution

Enershield Air Barriers are custom-made for each doorway to ensure a seal up to 90%. These air barriers also maintain air speeds of 800 fpm above the ground, which creates an ideal environmental separation between outside and inside air temperatures, saving you on heating and cooling costs.

HORIZONTAL ENERSHIELD AIR BARRIER



UP TO
90%
SEAL

DSH-144 shown

VERTICAL ENERSHIELD AIR BARRIER



Leaders in the industry, innovators in technology



Save energy



Enhance comfort



Prevent heat from entering the facility



Minimize humidity



Deter dust and insects



Put an end to cold drafts

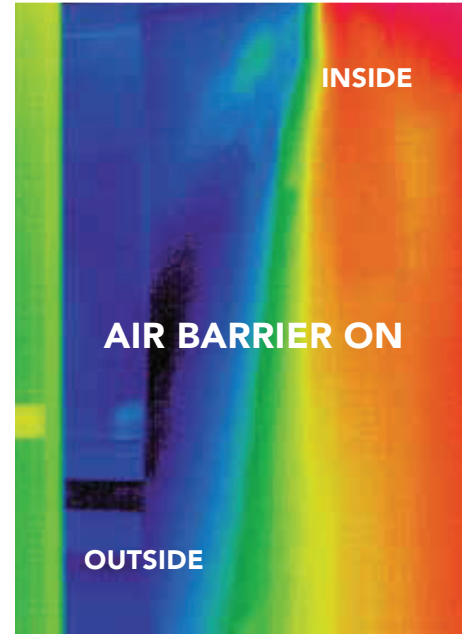
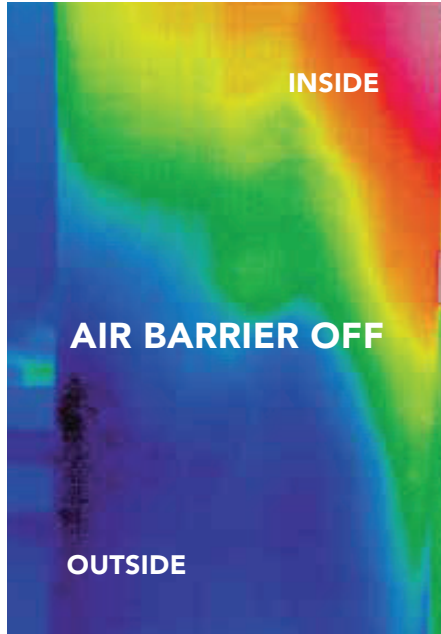


Create an environmental separation

DSH-168 shown

Seal off open doorways

Reduce significant heat and A/C loss by up to 90%



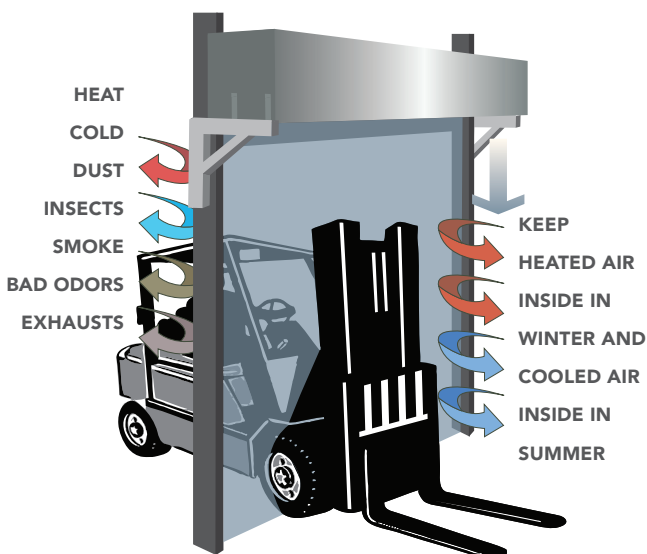
Heated air curtains fall short

Heated air curtains do not work since air passes through too quickly without capturing enough heat, resulting in warm air mixing with the internal air in a facility which is immediately blasted outside.

How an air barrier works

Enershield Air Barriers create an effective seal on a doorway by recirculating the air already in your facility in a laminar (smooth) flow across the doorway. The kinetic energy in the moving air generates a barrier—similar to a waterfall—that prevents leakage of air between two areas with different pressure and climate.

Smoother air results in a stronger barrier to prevent outside air penetration.



Get the stats

Save up to 15 units of energy for every one unit of energy consumed by an Enershield Air Barrier.

Your yearly energy consumption

For a typical six-foot-wide door, operating at **eight hours/day** for **five days/week**, your yearly energy bill would be approximately **30x less** by operating an Enershield Air Barrier.

\$80
Enershield Air Barrier

\$2,400
Heated air curtain
*Based on an average 8kW model

The investment that gives back

Enjoy substantial energy savings while creating a more comfortable environment for you, your customers and your employees by installing Enershield Air Barriers to create up to a 90% seal on any doorway.

Recirculate air that's already there

Enershield Air Barriers are specifically designed to recirculate air in your facility using a uniform flow, creating up to a 90% seal on the doorway.

Advantages of utilizing Enershield

- CSA certified manufacturing facility of the highest quality
- Powder-coated steel frame construction and sheet metal jacket provide a rigid, corrosion-resistant unit to withstand even the harshest environments
- Acoustic insulation allows quiet operation
- Uniform and consistent spacing of blowers, external motor placement on larger units along with patented unique diffuser efficiently seals doorways

For retail doorways up to 7' high

Direct drive (110v) - Cabinet (9 3/8" H x 8 3/4" W)

Microshield	MCS-36	MCS-48	MCS-72
Air velocity (fpm) high/low	3150/2500	3150/2500	3150/2500
Air volume (cfm) high/low	647/530	883/706	1340/1060
Motor (s) (W)	High: 300 Low: 270	High: 400 Low: 360	High: 600 Low: 540
Weight (lbs) (kg)	35.2lbs/ 16kg	39.7lbs/ 18kg	57.2lbs/ 26kg

For climate control up to 10' high

Direct drive (1hp) - Cabinet (20" H x 17 1/2" W)

Durashield	DS-72	DS-96	DS-120	DS-144	DS-168	DS-192
Air velocity (fpm) (m/s)	4500/23	4500/23	4500/23	4500/23	4500/23	4500/23
Air volume (cfm) (l/s)	8475/ 4000	11300/ 5333	14125/ 6666	16950/ 8000	19775/ 9333	22600/ 10666
Motor (s) (hp)	3 @ 1/2	4 @ 1/2	5 @ 1/2	6 @ 1/2	7 @ 1/2	8 @ 1/2
Weight (lbs) (kg)	300lbs/ 136kg	400lbs/ 181kg	500lbs/ 227kg	600lbs/ 272kg	700lbs/ 318kg	800lbs/ 363kg

For climate control up to 18' high

Belt drive (3hp) - Cabinet (22" H x 19 1/2" W)

Ultrashield	US-120	US-144	US-168	US-192	US-216	US-240
Air velocity (fpm) (m/s)	6500/33	6500/33	6500/33	6500/33	6500/33	6500/33
Air volume (cfm) (l/s)	19875/ 9380	23850/ 11256	27825/ 13132	31800/ 15008	35775/ 16884	39750/ 18760
Motor (s) (hp)	1 @ 10	2 @ 7 1/2	2 @ 7 1/2	2 @ 10	2 @ 10	2 @ 10
Weight (lbs) (kg)	800lbs/ 363kg	1080lbs/ 490kg	1153lbs/ 523kg	1276lbs/ 579kg	1388lbs/ 630kg	1452lbs/ 699kg

* Model number reflects approximate cabinet length in inches

Features

- Telescopic sliders and wall brackets are provided to allow for easy installation
- Control panel incorporates photo cell switch, which allows for automatic activation upon door opening
- Each order is custom-made to best suit the specific application
- Enershield Air Barriers can be mounted horizontally or vertically depending on the application

For retail doorways up to 9' high

Direct drive (1hp) - Cabinet (16 1/2" H x 16 5/8" W)

Comfortshield	CS-36	CS-48	CS-72	CS-72
Air velocity (fpm) (m/s)	4200/21.5	4200/21.5	4200/21.5	4200/21.5
Air volume (cfm) (l/s)	4100/1935	4100/1935	6150/2900	8200/3870
Motor (s) (hp)	2 @ 1/2	2 @ 1/2	3 @ 1/2	4 @ 1/2
Weight (lbs) (kg)	150lbs/ 68kg	170lbs/ 77kg	246lbs/ 112kg	300lbs/ 136kg

For climate control up to 12' high

Belt drive (3hp) - Cabinet (20" H x 17 1/2" W)

Durashield-HD	DSH-96	DSH-120	DSH-144	DSH-168	DSH-192
Air velocity (fpm) (m/s)	5500/28	5500/28	5500/28	5500/28	5500/28
Air volume (cfm) (l/s)	12900/ 6088	16125/ 7610	19350/ 9132	22575/ 10654	25800/ 12176
Motor (s) (hp)	1 @ 5	1 @ 7 1/2	2 @ 5	2 @ 5	2 @ 5
Weight (lbs) (kg)	510lbs/ 231kg	650lbs/ 295kg	865lbs/ 393kg	905lbs/ 412kg	1012lbs/ 460kg

For climate control up to 26' high

Belt drive (3hp) - Cabinet (23 5/8" H x 22" W)

Xtremeshield	XS-120	XS-150	XS-180	XS-210	XS-240
Air velocity (fpm) (m/s)	7500/38.1	7500/38.1	7500/38.1	7500/38.1	7500/38.1
Air volume (cfm) (l/s)	23825/ 11244	29781/ 14055	35738/ 16866	41694/ 19677	47650/ 22488
Motor (s) (hp)	1 @ 5	1 @ 7 1/2	2 @ 5	2 @ 5	2 @ 5
Weight (lbs) (kg)	900lbs/ 408kg	1065lbs/ 483kg	1320lbs/ 599kg	1564lbs/ 709kg	1760lbs/ 798kg