

Guardrail Systems

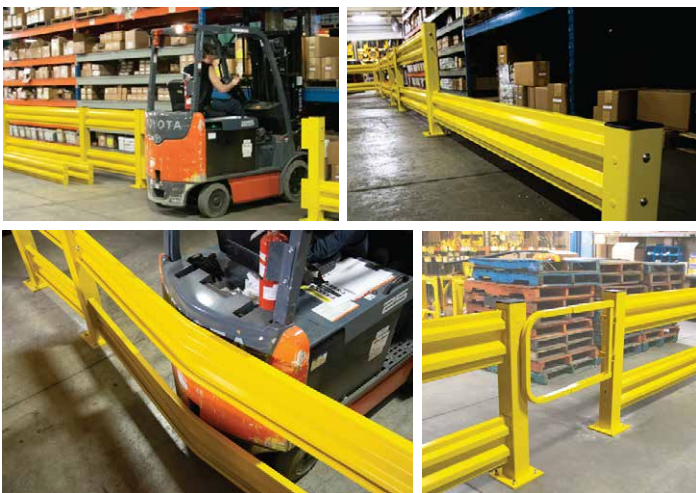
Two ways to protect and prevent accidents

Protect pedestrian walkways, expensive equipment, volatile or at-risk areas with guardrails that can withstand forklift impacts

Steel Guardrails

For areas where accidental impacts are possible but less likely

- Constructed from steel for ultra strength.
- Anchored in concrete.
- Bright safety yellow increases visibility and reduces the chance of accidents.
- Impacted tested for 10,000 lbs at 4 mph (6.4 kpm).
- Modular components for easy replacement if damaged from impacts.
- Single or double rail.
- 18" or 44" post heights.
- Lift out removable rails for temporary access.



Click here to watch video

Flexible Rebounding Guardrails

For areas where repeat impacts are likely

- Constructed from flexible polycarbonate rails and rebounding steel bollards.
- Anchored in concrete.
- Bright safety yellow increases visibility and reduces the chance of accidents.
- Absorbs and deflects impacts to reduce damage to guardrails and forklifts.
- Impacted tested for 16,000 lbs at 4 mph (6.4 kpm) or 6,000 lbs at 6 mph (9.6 kpm).
- Prevents costly concrete damage because they don't transfer impacts to their anchors.
- Single 6.6" railing lengths.
- 3" or 4" diameter 42" rebounding steel bollard posts.



Click here to watch video