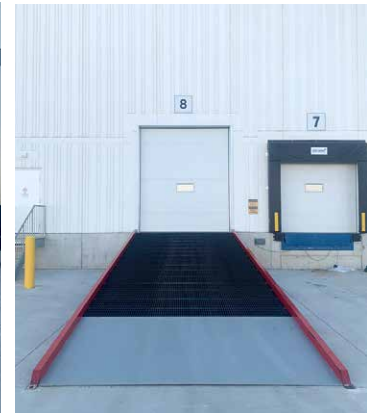
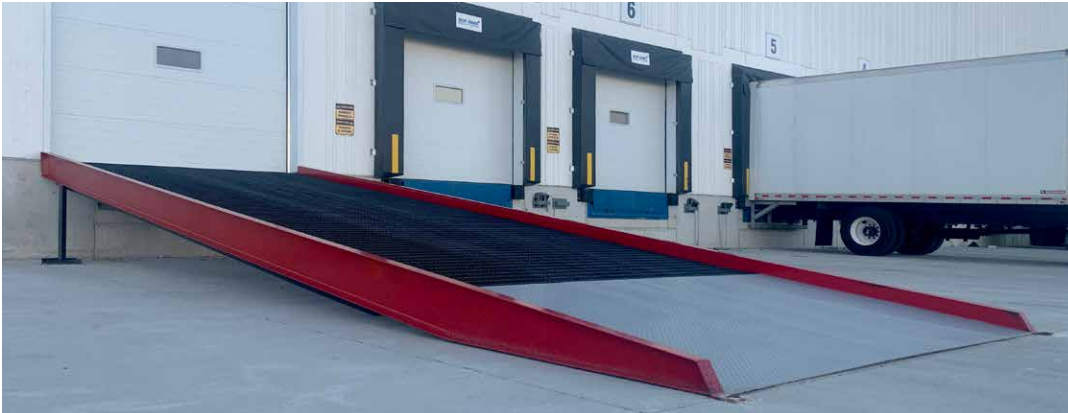




**Loading Dock Ramp  
Warehouse**

Ajax, ON



**Project Overview**

A general contractor outfitted this Ajax warehouse's loading dock. They contacted us because they needed vehicles and forklifts to drive in and out of the building. However, all the receiving doors were at dock height and not at ground level.

To create a drive-in door at dock height, we added a Stationary Steel Drive-in Ramp to bring forklifts to ground level and vehicles into the warehouse. This easy-to-install ramp was the perfect solution especially when compared to the alternative of the costly construction of a concrete ramp which could affect the drainage around the building.

The ramp has 2 x 3/16 inch thick steel serrated bar grating and has a 15,000 lbs capacity. It is 30' long, so it has a 12.9% grade or 7.4-degree angle to make it easy for forklifts to drive up and down even if carrying a load.

As a result, this Ajax warehouse can easily move materials in and out of their building by letting smaller vehicles enter or forklifts bringing products outside through their new Stationary Steel Drive-in Ramp.

**Featured Products**

Stationary Steel Drive-in Ramp



- Ramp length 30'
- Platform outside width 126"
- Platform inside width 120"
- Capacity 15,000 lbs



- ✓ Improve safety
- ✓ Workplace productivity