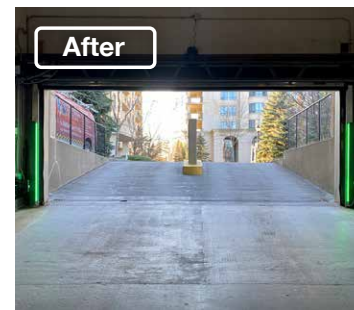
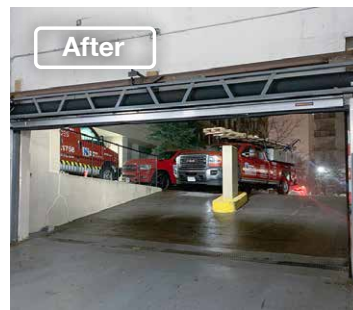
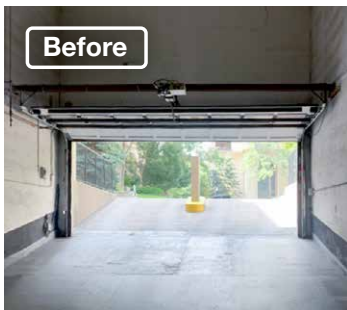
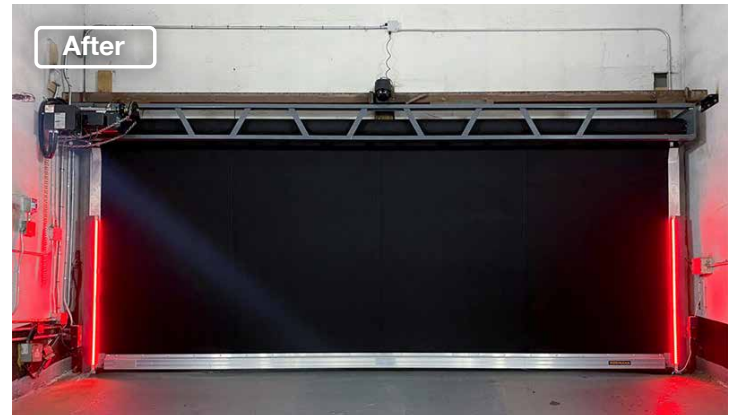




Low Headroom Rubber Door with Lite-Advance TSCC2017

Toronto, ON



Project Overview

The existing door of a parking garage in Toronto was made of wood, old and slow to open. Furthermore, the door operator was starting to fail and required replacement. Additionally, the door lacked safety lights to inform tenants about when it was safe to proceed.

To address these issues, TSCC2017 contacted Northern Dock Systems to replace the operator and upgrade the entire door while also adding safety lights. The new [Extra Low Headroom Rubber Parking Door \(HDLH\)](#) is much faster and aesthetically pleasing with opening speeds of up to 30" per second and requiring only 12" of headroom clearance.

Moreover, this industrial drive rubber door does not have any hinges, cables, pulleys or tension springs, reducing the number of moving parts that could break down and require maintenance. The door's industrial drive system with soft start and soft stop frequency inverter drive makes it suitable for high-cycle use while increasing safety and reducing wear. As a result, the door operator comes with an unmatched warranty of 5 years or 1 million cycles.

To enhance safety, [LED Lite-Advance Door Monitoring Lights](#) were installed on the garage door. These door lights notify tenants when the door is open or closed. When the door is closed, opening or closing, the lights will be red. When the door is fully open and safe for tenants to proceed, the light will turn green.

✓ Operational efficiency

✓ High-speed

✓ High cycle

✓ Heavy-duty

✓ Springless

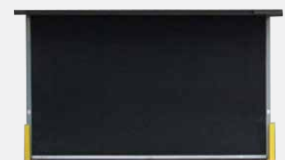
✓ Low maintenance

✓ Improve safety

✓ At driver's eye level

Featured Products

[Extra Low Headroom Rubber Parking Door \(HDLH\)](#)



[Lite-Advance Door Monitoring Lights](#)



EQUIPMENT INSTALLATION



ELECTRICAL SERVICES