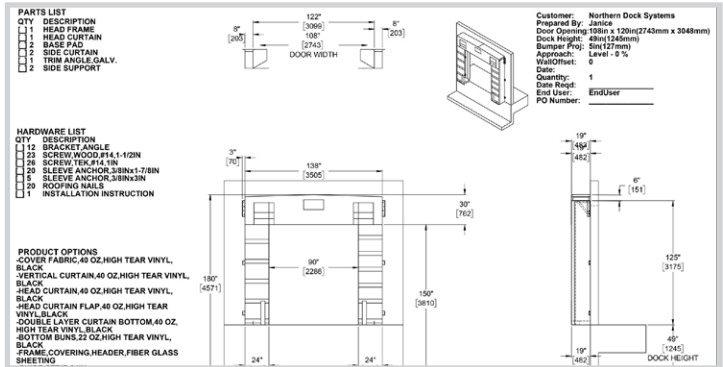




Foam Frame Dock Shelter Food Manufacturing Plant

Caledon, ON



Project Overview

One of the positions at this food manufacturing plant in Caledon had a missing head pad on their dock shelter from a truck accidentally ripping it off. They contacted Northern Dock Systems to replace it with a brand-new dock shelter.

Our technicians replaced the old dock shelter with a new [Blue Giant Foam Frame Dock Shelter \(BG600V\)](#). This dock shelter and seal combo can fit door openings up to 10' x 10'. It is easy to gain unrestricted access to the interior of a truck, making it an ideal solution for tailgate or standard trailers. It has no mechanical or adjustable parts, preventing complications arising from conventional seals and shelters.

It features:

- 40oz vinyl fabric.
- Plastic-capped 3M stays.
- Foam-filled leading edge curtain.
- Double-stitching on all seams.
- Polyethylene sheeting on the head frame.
- 18" projection.
- Durable head unit made from pressure-treated lumber and measuring 136" wide, with an 18" projection and a 36" head curtain.
- Two foam vertical side pads with curtains capable of withstanding repeated impact.
- High-visibility yellow guide stripe.
- Replaceable foam bottom pads seal the gap between the truck and building.
- Galvanized mounting hardware.

- ✓ Tight seal
- ✓ Energy-savings

Featured Products

[Blue Giant Foam Frame Dock Shelter \(BG600V\)](#)



- Plastic-capped 3M stays
- Foam-filled leading edge curtain
- Polyethylene sheeting on head frame



EQUIPMENT
INSTALLATION



ENERGY
SAVING
SOLUTIONS