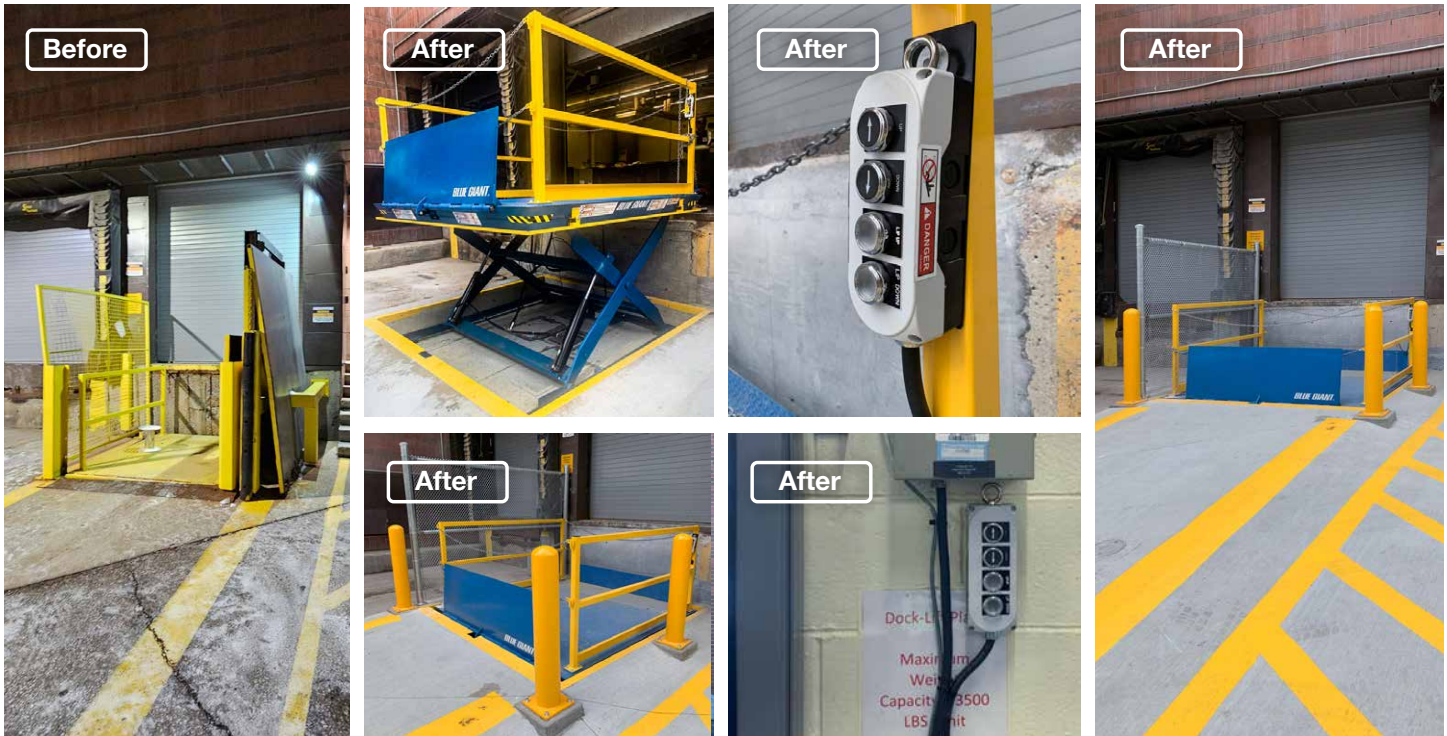




**Dock Lift Table in Concrete Pit**  
Palmark Construction at 4900 Yonge

Toronto, ON



**Project Overview**

The old lift table at 4900 Yonge Street in Toronto had reached the end of its lifespan and needed to be replaced. Our Equipment Construction and Design team collaborated with Palmark Construction to provide and install a new [Blue Giant LoMaster Stationary Dock Lift](#). The dock lift was installed into a preformed concrete pit so that the lift table could sit flush to the ground for easy loading and unloading.

Our electrical team installed a NEMA 4X-rated (waterproof) push-button control and mounted it on the deck for easy operation. Additionally, NEMA 4X-rated (waterproof) push-button controls were added on the inside of the door, which we interlocked with the overhead door to prevent the dock lift from being operated from the inside when the door is closed. This was added to improve safety and to prevent the dock lift from being operated from inside when the operator does not have a clear view of the dock lift.

These controls both raise and lower the dock lift, in addition to raising and lowering the optional hydraulic lip. Furthermore, the deck has an anti-slip powder coat to prevent accidents. Moreover, the frame and deck have an enriched zinc powder coating to protect them from rust.

To further enhance safety and stay compliant with OHSA, this dock lift features:

- Electric toe guards.
- Yellow curb angles to mark concrete pit.
- 42" high bolt-on steel guardrail comes with a mid-rail and 4" kick plate.
- Bollards to protect the new dock lift from accidental impacts.
- Personnel restraint chains on the openings of the dock lift.

- ✓ Improve safety
- ✓ Easy operation
- ✓ Workplace productivity
- ✓ Anti-slip

**Featured Products**

[LoMaster Stationary Dock Lift](#)



- Completely sealed, weather-resistant cylinders vented back to hydraulic tank to prevent contaminant entry.
- Easy to operate with hand-held push button controls.
- Versatile ground-level when no loading dock is present.

