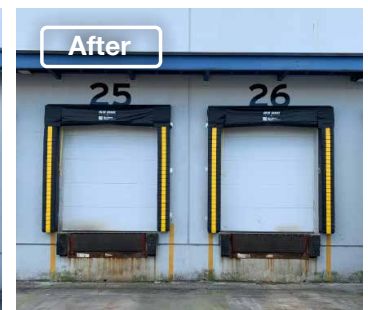
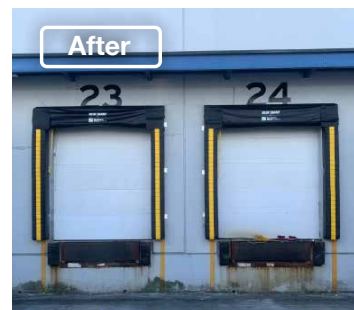
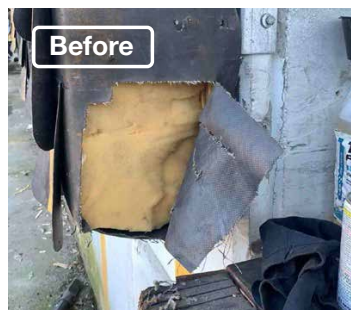
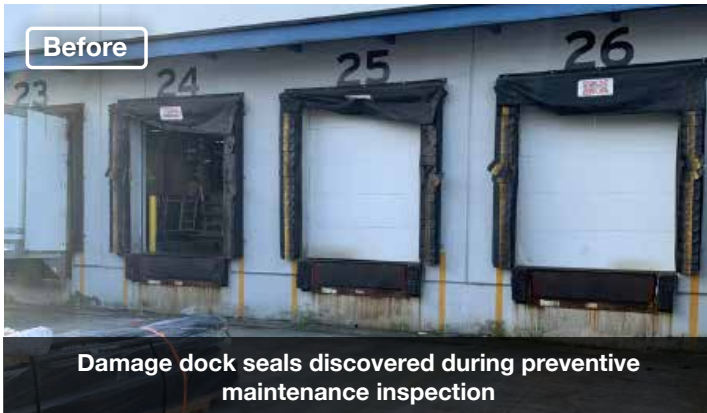




Adjustable Head Curtain Dock Seal Replacement Starline Windows Ltd.

Surrey, BC



Project Overview

During a preventive maintenance visit, where our technician was inspecting and serving the dock levelers, noted that four of the dock seals were damaged and needed to be replaced.

After getting an estimate from Northern Dock Systems, they decided to proceed with the replacements to [Blue Giant Adjustable Head Curtain Dock Seals \(BG200\)](#).

The head curtain dock seal has two resilient foam side pads serve as a cushion between the trailer and the building, while the full-width weighted head curtain conforms to the top of the trailer. The sloped head curtain supports proper drainage, preventing water build-up.

There is a built-in rope and pulley system that can be raised or lowered to accommodate varying trailer heights, ensuring that outdoor contaminants are kept out and conditioned air is maintained inside.

The head curtain features wider corner pleats, and all seams are double-stitched for added durability. The bottom of the pads is tapered to eliminate bumper pinch.

A wide range of durable fabrics is available to meet all application requirements, and the flaps have a 4-inch (102 mm) exposure. Additionally, there is a full-height yellow guide stripe and a full foam face with a split Velcro curtain.

Featured Products

[Head Curtain Dock Seals \(BG200\)](#)



- Two resilient foam side pads
- 4" (102 mm) exposure on flaps
- Split Velcro curtain
- Full height yellow guide stripe

- ✓ Improve safety
- ✓ Workplace productivity
- ✓ Energy-savings
- ✓ Tight seal

