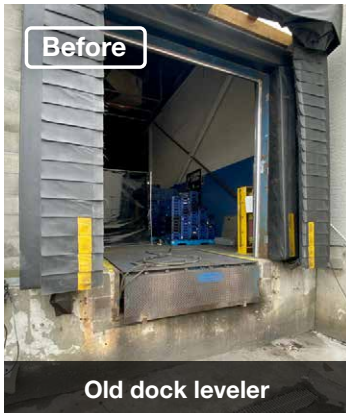


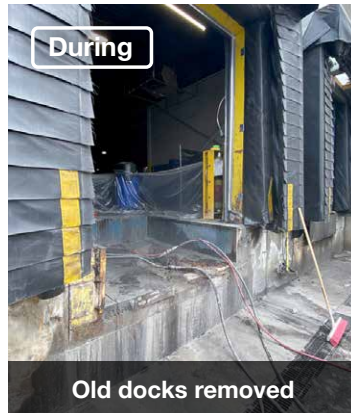


Two Hydraulic Dock Leveler Replacements
Ottawa Food Manufacturing Plant

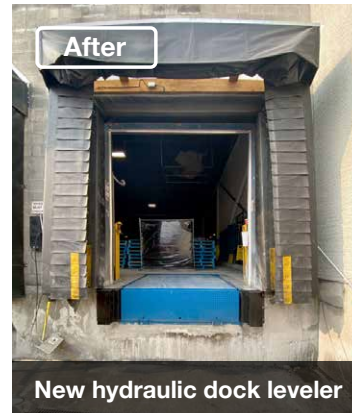
Ottawa, ON



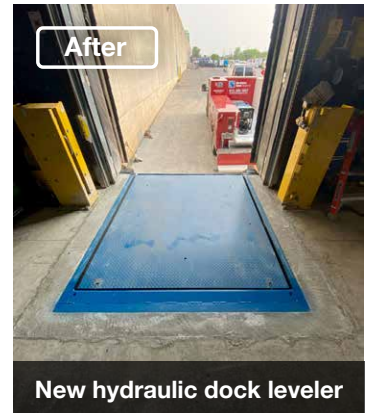
Old dock leveler



Old docks removed



New hydraulic dock leveler



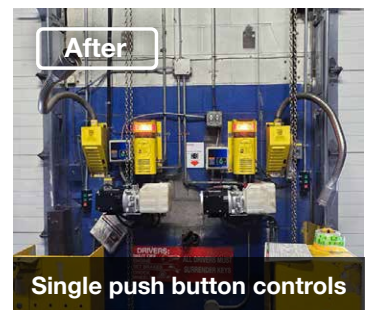
New hydraulic dock leveler



After



After



After

Single push button controls

Project Overview

The old docks at two of the positions at this food manufacturing plant in Ottawa had reached the end of its lifespan and needed to be replaced. The existing hydraulic leveler was frequently breaking down, causing delays in the loading and unloading processes. These inefficiencies led to increased repair costs and potential safety hazards.

The new 6'x8' [Blue Giant Hydraulic Dock Leveler](#) had low maintenance costs and boasts:

- Rust-resistant powder coat for a long-lasting finish.
- Consistent quality and strength with robotic welding.
- An inverted hydraulic cylinder requires less maintenance. The design prevents dust and debris from clogging up the cylinders and is continually self-bleeding.
- 8' long dock means to a more gradual ramp for safer unloading for forklifts.
- 6" of spacing between beams so it is suitable for both 3 and 4-wheeled forklifts.
- A pour-in dock pan for an easier and quicker installation, which meant less downtime for this facility.
- Side and rear weather seals to not only keep out the weather but also rodents.
- The NEMA4X single push button controls for an easy operation which is wash down ready for this food manufacturing plant.
- Laminate dock bumpers to protect the new dock from the impacts of trailers.

The replacement of the loading dock levelers at this Ottawa food manufacturing plant resulted in significant improvements in operational efficiency, safety and repair cost savings. The strategic decision to invest in new equipment, not only resolved existing issues but also positioned this facility for future growth. Regularly assessing your equipment can lead to maximum efficiency and safety in operations.

- ✓ Improve safety
- ✓ Easy operation
- ✓ Workplace productivity
- ✓ Long lasting

Featured Products

[Hydraulic Dock Leveler \(Extreme\)](#)



- Heavy-duty cylinders.
- Rust-resistant powder coat.
- A full hydraulic operation to automatically extend the lip.
- Simple operation with single push-button control.
- NEMA4X operators.
- Less maintenance and wearable parts than mechanical models.

