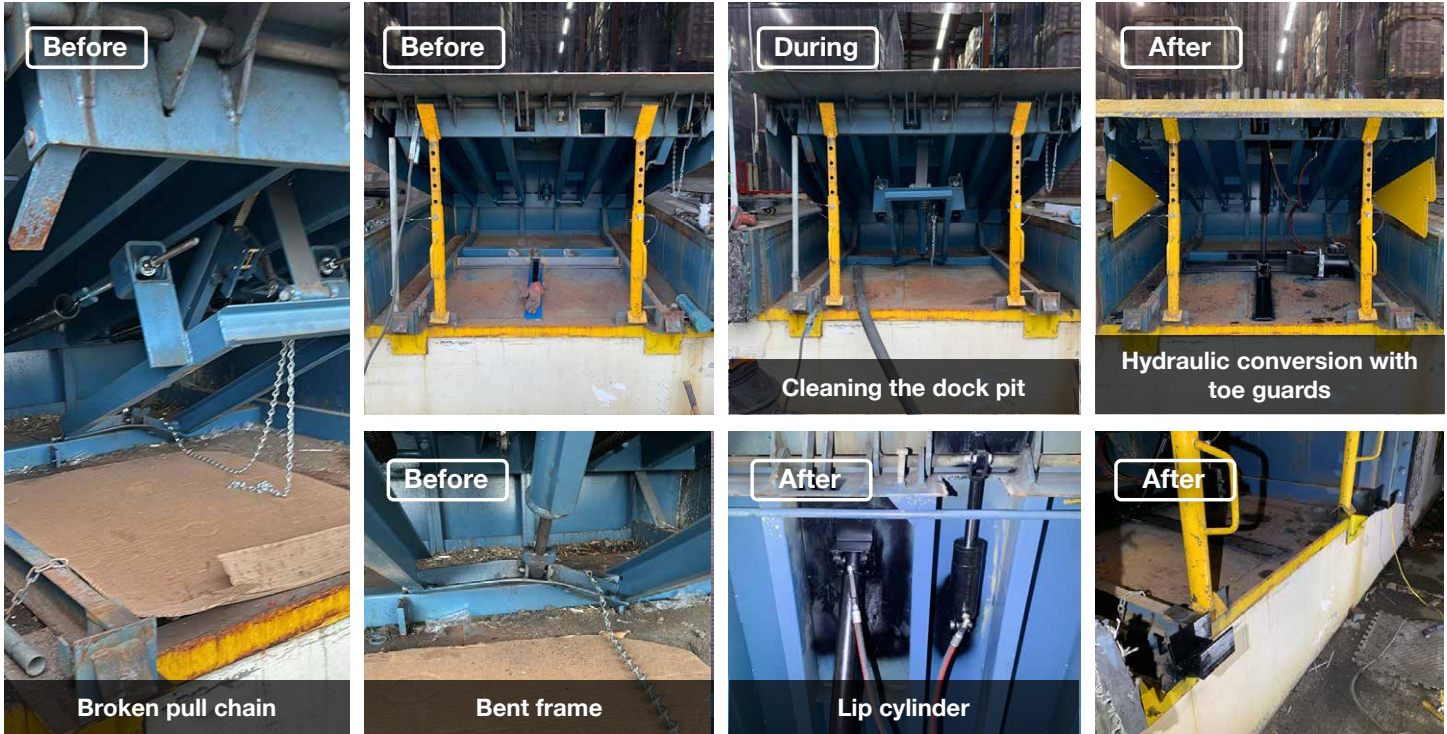




Hydraulic Conversion for a Mechanical Dock Leveler Tab Labs Inc. (Fertin)

Langley, BC



Project Overview

Tab Labs Inc. in Langley faced ongoing issues with their mechanical dock, including a recent pull chain failure. Instead of repairing it again, they contacted Northern Systems to install a [Hydraulic Dock Conversion Kit](#).

Our Installation Technician arrived on-site with the necessary tools and parts, meeting with the site contact to review the scope of work. The tasks included installing a new 208V, 3-phase hydraulic dock conversion kit and adding toe guards for safety.

The technician began by using a forklift to open the dock and place it on safety stands. After cleaning out the pit and removing old mechanical components, he cut and welded steel frame supports for the new hydraulic main lift and lip cylinders. The technician then welded the cylinder mounts, reinforced the structure, and cleaned and painted the welded areas.

Next, the power pack was bolted onto a mounting plate and welded to the dock's leg frame. After filling the hydraulic oil reservoir, hoses and fittings were installed between the cylinders and power pack.

During testing, the technician noticed the lip plate lacked latches to secure the dock. He fabricated and welded new latches, adding gussets for extra support, and painted them black to match the dock's finish.

“ Your team did such a good job on our dock levelers I was asked to get the same thing done at our new building. ”
- Maintenance Manager

Featured Products [Hydraulic Conversion Kit](#)



- Adaptable to all sizes.
- Full hydraulic operation to automatically extend the lip.
- Simple operation with NEMA4 single push-button control.
- Self-contained, 1 HP power unit (available in single and three phase voltages)
- Heavy-duty deck and lip cylinder.
- Hoses and hardware.
- Owner's manual and placard.



**EQUIPMENT
INSTALLATION**



**ELECTRICAL
SERVICES**