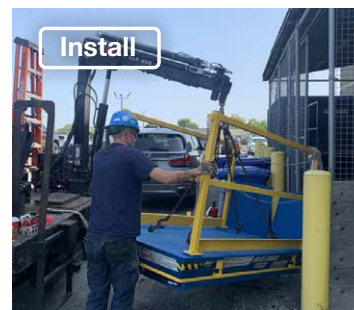




Dock Lift Table Replacement CSA Group

Etobicoke ON



Project Overview

The current dock lift table at this pharmaceutical facility in Etobicoke was old, rusted and the frame was rotting. Additionally, the existing pump was unreliable as the dock lift table was having problems travelling up or down.

They reached out to Northern Dock Systems to remove and replace their dock lift table. We installed a new [Blue Giant LoMaster Stationary Dock Lift table](#). This new dock lift has a much cleaner and tidier appearance. With its new anti-slip powder-coated deck it will be rust-resistant for years to come.

Additionally to the deck being protected from rust, the hydraulic cylinders are completely sealed and vented back to the hydraulic tank to be weather resistant for outdoor use.

Moreover, the split lip rather than a single lip design will make it easier on employee's backs when lifting and lowering the lip

In addition, this dock lift table comes with an OSHA-compliant 42" high bolt-on steel guardrail and perimeter personnel restraint chains on both open sides to improve safety.

Furthermore, the new pump with hand-held 24V push button up/down controls will make it easy, more reliable and safer to use.

Finally, our technicians finished off the installation by painting and resealing the curb angles around the dock lift table pit to improve safety and protect against rust.

- ✓ Improve safety
- ✓ Easy operation
- ✓ Workplace productivity
- ✓ Anti-slip

Featured Products

[LoMaster Stationary Dock Lift](#)



- Completely sealed, weather-resistant cylinders vented back to hydraulic tank to prevent contaminant entry
- Easy to operate with hand-held push button controls
- Versatile ground-level when no loading dock is present

